

# Conference packages



# Standard package

\$40pp

Morning Tea, Lunch & Afternoon Tea with tea, instant coffee and juice included at all breaks.

## Morning tea

Scones with jam & cream  
House baked biscuits

## Lunch

Sandwiches, wraps and turkish bread  
or  
Cold meats & salads  
Fruit platter

## Afternoon tea

Muffins  
House baked biscuits

For half day packages or tailored menus, please contact us for a quote.



# Executive package

\$60pp

Morning Tea, Lunch & Afternoon Tea with tea, instant coffee and juice included at all breaks.

## Morning tea

Danishes and savoury croissants

Fruit platter

## Lunch

Alternate drop (Choose 2)

Rump steak with kipfler potatoes, broccolini & jus

Chicken thigh cutlet with cheesy polenta & sugo sauce

Steamed bao buns with smokey banana blossom, kim chi & vegan mayo (Vegan)

## Afternoon tea

Quiches and sausage rolls

Savoury muffins

Fruit platter

For half day packages or tailored menus, please contact us for a quote.



# Venue



The Toowoomba Motel & Events Centre offers three air-conditioned function rooms to suit from 20-160 people, all of which can be adapted to suit your requirements. Located at the top of the Toowoomba Range and only minutes to the Toowoomba CBD, it has budget friendly accommodation conveniently available on-site.

## Facilities include:

- Three function rooms: K's Room, Premiers Room and the Lord's Function Room
- Additional dining room available for conference recess
- Full catering available and licensed bar facilities
- Audio-visual equipment including projector and whiteboard
- Mobility friendly access ramp and toilets
- Ample free off-street parking for attendees and guests
- Budget friendly accommodation including queen rooms, spa room and family sized accommodation

# K's Room

K's Conference room is suitable for business meetings, small conferences, and training sessions. With concertina doors, it can be closed off for a private and intimate area that can be adjusted to suit your needs and features a separate breakaway space for refreshments.



## Capacity:

U-Shape 20

Classroom 24

Boardroom 24

Theatre 40

Dimensions: 5.5 x 9m

Room size: 50m<sup>2</sup>

## Pricing

Full day - \$250

Includes use of the projector  
and white board

All table linens

Tea, Coffee and Juice

Cleaning fee

# Premiers Room



The Premiers Room is ideal for workshops, medium sized seminars or as a break-out space with the adjacent Lords Function room. It includes an attached bar and morning tea station.

## Capacity

U-Shape 24

Classroom 24

Boardroom 24

Banquet 48

Theatre 60

Dimensions 9.5 x 10.5m

Room size 100m<sup>2</sup>

## Pricing

Full day - \$350

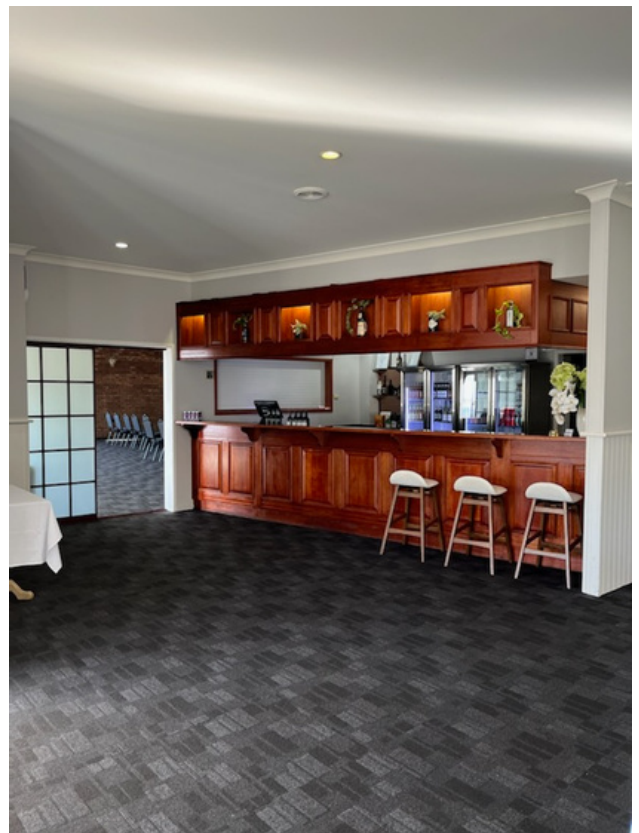
Breakout room only - \$100

Includes use of the projector  
and white board

All table linens

Tea, Coffee and Juice on arrival

Cleaning fee



# Lords Room

Best suited to large conferences, black tie events and galas, the Lords Function Room is our largest space and can be used in conjunction with the adjacent Premiers Room. It features an original brick wall and stunning chandelier light.



## Capacity

Boardroom 50  
Classroom 54  
U-Shape 60  
Banquet 160  
Theatre 220  
Dimensions 13m x 17m  
Room size 230m<sup>2</sup>

## Pricing

Full day - \$500  
Breakout room with bar -  
\$100  
Includes use of the projector  
and white board  
All table linens  
Tea, Coffee and Juice station  
on arrival  
Cleaning fee

